



CLEANING & MAINTENANCE



CLEANING & MAINTENANCE

# INDEX

1. QUALITY OF PRODUCTS	
5	INTRODUCTION
6	COMPLAINTS
2. FURNITURE	
8	PAINTED WOOD
8	MARBLE
9	MARBLE AND NATURAL STONE PRESERVATION
10	METAL, CRYSTAL, PLASTIC MATERIALS
10	PELTROX®
10	ETCHED OR SAND-BLASTED GLASS
10	CUSHIONS
10	MATTRESSES
3. STANDARD FABRICS	
12	ABBA <i>new2025</i>
13	ALCIDE
14	BARREN <i>new2025</i>
15	BIARRITZ
16	CHAMONIX <i>new2025</i>
17	CLARON
18	COCÓ
19	CRUISE CHENILLE & CRUISE MÉLANGE
20	DAMARIS
21	DAYDREAMER
22	DUCHESSA
23	FANTASY
24	FARGO <i>new2025</i>
25	FLASH <i>new2025</i>
26	GOLD DUST <i>new2025</i>
27	INFINITY CORD
28	NELSON
29	PENNY
30	PEONIA & GARDENIA

31	SAN DIEGO
32	SPLIT
33	TINTO
34	TONGA
35	WILLIS
36	REMOVING STAINS FROM TEXTILES
4. LEATHERS AND SADDLE LEATHER	
39	INTRODUCTION
40	ANILINE LEATHER AND ANILINE NUBUCK LEATHER PRESERVATION
41	KEEP YOUR LEATHER LOOKING NEW
44	SADDLE LEATHER
45	ANILINA NUBUCK
46	ANILINA SENSE
47	PELLE
48	PELLE PLUS
49	POLYGON
5. TAILORING FABRICS	
51	ALONG <i>new2025</i>
52	ALPACA
53	GLAZE
54	JAMES
55	JORIT
56	KALIPE'
57	LOUNET
58	MATISSE
59	MIKADO & MIKADO CLOUD
60	PEBBLE
61	SALIMA
62	SPUMA
63	TERRAZZO
64	VALENZANO <i>new2025</i>

65	WILBUR
6. TAILORING LEATHER	
67	PELLE SATIN <i>new2025</i>
7. OPEN - AIR FURNITURE	
69	PRODUCTS
69	PROTECTIVE SLIPCOVER
70	WOOD
70	MARBLE
70	METAL
8. OPEN - AIR FABRICS	
72	ALPINA
73	APOLLODORO
74	CHECK
75	CIMA
76	ERFOUD
77	GOBI
78	KEY WEST
79	MAGNETIC
80	MARINA
81	MERIDA
82	MONTEREY
83	ORCHIDEA
84	PADANG
85	PIED DE POULE
86	PLUTARCO
87	POOL RECYCLED
88	SAND
89	SICILY
90	SHOCK
92	TULUM
93	TUNIS

9. OPEN - AIR LEATHER	
95	PELLE PERFORMA
10. ATMOSPHERE	
97	RUGS
99	OPEN - AIR RUGS, VASES

# 1. QUALITY OF PRODUCTS

- INTRODUCTION
- COMPLAINTS



# INTRODUCTION

Giorgetti warrants the quality of its Products and undertakes to make, at its production sites in Meda, Lentate and Misinto (Italy) any repairs and/or replacements of parts in case of manufacturing defects.

Repairs and replacements due  
\_ to standard wear and tear or  
\_ to lack of periodic checks or maintenance of the Products, or  
\_ to use which turns to be improper or negligent or not compliant with the requirements of the product sheet,  
are excluded from the warranty.

Furthermore, any warranty for wrong installation or maintenance or repairs made by unauthorized third parties or with damaged or not original spare parts is excluded.

In case of effectiveness of the warranty pursuant to the above, the relevant Product must be shipped by the Client at the port indicated by Giorgetti and shall be sent back by Giorgetti in carriage free.



# COMPLAINTS

At the time of delivery of Products, the Client must check that the parcels are intact and that the quantity corresponds to that shown on the accompanying documents referred to the Order. In the case of any inconsistency, the Client must note its reserves in the delivery's documents, otherwise the Products shall be deemed delivered intact and in the same quantities agreed in the Order.

Any complaint relating to a Product must be sent in writing by, and no later than 8 days from the receipt of the same Product, under penalty of forfeiture of the relevant right. Under the penalty of inefficacy of the complaint, the defect must be detailed and documented through digital photos highlighting the alleged defect.

For damages due to the transportation, the carrier's insurance shall respond only in the event that the damages are detailed and timely raised. In particular: (i) for damages immediately detectable by the Client, the reserve must be noted on the delivery documents at the presence of the carrier; (ii) damages non immediately detectable must be noticed in writing to Giorgetti and to the carrier in copy by and no later than 8 days from the receipt of goods.

Any returns must be authorized in advance in writing by Giorgetti and returned in carriage free, duly packed. In case of identified defect of the a Product, the replacement of the same at care and expense of Giorgetti shall be the only remedy available to the Client.

The products we supply may differ from the samples available with retailers with reference to: finish and grains of wood, colour and grains of marble. These differences cannot be considered a reason for a claim as wood and marble are natural finshes.



## 2. FURNITURE

- PAINTED WOOD
- MARBLE
- MARBLE AND NATURAL STONE PRESERVATION
- METAL, CRYSTAL, PLASTIC MATERIALS
- PELTROX®
- ETCHED OR SAND-BLASTED GLASS
- CUSHIONS
- MATTRESSES



# FURNITURE

Do not use abrasive products to clean.

Use a slightly damp cloth for a perfect cleaning of the product, without using abrasive detergents or solvents.

At the end, carefully dry the surface.

## **PAINTED WOOD**

Wood is a live material whose natural characteristics remain throughout any treatment, even when it is carved or moulded according to the shapes studied by the designer's creativity. For this reason, the veining and shades of the colours may sometimes be different but this does not mean that the wood is faulty, it simply reflects its uniqueness. For maintenance, a cloth or a slightly damp sponge are sufficient. Abrasive products or anything containing solvents and/or alcohol are to be avoided. For dust, a damp cloth is advised.

For greasy finger marks, a sponge soaked in water and washing up liquid can be used, followed by a cloth dampened with water.

Avoid using any detergents which may contain pure ethyl alcohol.

## **MARBLE**

Regular maintenance should be performed using a cloth dampened with lukewarm water. In the event of marks caused by liquid and/or greasy substances, remove immediately by dabbing with an absorbent cloth.

The whole surfaces should then be wiped over with a cloth dampened with lukewarm water.

The use of solvents, silicone and abrasive detergents must be avoided.

Maintenance with commercially available water-repellent waxes is recommended to prevent stains and marks.



# MARBLE AND NATURAL STONE PRESERVATION

This kit contains the ultimate solution for preserving the beauty of your marble and natural stone surfaces.

Our kit includes a specialized cleaner and protective polish to keep your surfaces looking their best.

## MARBLE & NATURAL STONE PROTECTIVE CLEANER

Specific cleaner for marble and natural stone surfaces; it removes dust, food and beverage stains. Ideal for daily use on tables, kitchen and bathroom countertops, etc. Dries without leaving any marks.

### INSTRUCTIONS

1. Before using the product, test on a small area of the surface.
2. Spray directly onto the surface to be treated.
3. Wipe with a microfibre cloth until the surface is completely dry.

Keep out of the reach of children.

Contents: <5% cationic surfactants,

<5% non-ionic surfactants, Limonene, 2-bromo-2-nitropropane-1,3-diol; Octylisothiazolinone.

Contains: 2-ottil-2H-isotiazol-3-one. May produce an allergic reaction.

## MARBLE & NATURAL STONE PROTECTIVE POLISH

Protects and revitalizes marble and natural stone surfaces. Specially formulated to keep surfaces clean for as long as possible. Ideal for daily use on tables, kitchen counters, and bathroom tops, etc. Provides effective protection against food and drink stains.

### INSTRUCTIONS

1. Before using the product, test on a small area of the surface.
2. Clean the surface to be treated with Marble and Natural Stone Cleaner. Allow it to dry.
3. Spray directly onto the surface to be treated.
4. Wipe with a dry microfiber cloth until the product is completely dry.

Do not use on floors or stairs.

Keep out of the reach of children. Contains: 2-methyl-2H-isothiazol-3-one;

1,2-benzisothiazol-3(2H)-one. May produce an allergic reaction.





# FURNITURE

## **METAL, CRYSTAL, PLASTIC MATERIALS**

Products sold commercially for delicate surfaces are recommended.  
Alcohol, solvents and abrasive detergents must be avoided.

## **PELTROX®**

The Peltrox® finish is made on a stainless-steel base, a metal alloy that combines the excellent mechanical properties of steel with the corrosion resistance of noble metals. We recommend regular cleaning with normal neutral detergent and a non-abrasive cloth or sponge. Rinse with plenty of water, then dry with a cotton cloth.

It is recommended to avoid scratching the surface by rubbing it with abrasive materials and not to place very hot and ferrous objects on it for a long time. Deoxidising products must absolutely be avoided, even if they are specifically for steel. Acidic cleaning agents such as muriatic acid, bleach, descaling products or products containing chlorine and/or ammonia are also to be avoided. Long-term contact with these substances would generate light-coloured discolouration that are impossible to remove. Avoid powdered preparations or abrasive paste, they would scratch the surface. In the event that the above-mentioned substances come into contact with stainless steel surfaces with Peltrox® finish, it is highly recommended to rinse immediately with plenty of water.

## **ETCHED OR SAND-BLASTED GLASS**

The use of distilled water on a cotton cloth is advised.  
For more difficult stains it is advisable to use washing up liquid.

## **CUSHIONS**

In order to be properly maintained, cushions should be fluffed up and aired frequently in order to shake the material to enable air to re-enter and the cushion to redistribute itself more evenly. Where possible, alternate the position of the cushions, swapping the most used cushions with the less used one.

## **MATTRESSES**

Turn mattress every month, end-to-end and side-to-side.  
This will even out slight body impressions that develop as the upholstery settles.  
A mattress protector should be used to avoid soiling.



### 3. STANDARD FABRICS

• ABBA *new2025*

• ALCIDE

• BARREN *new2025*

• BIARRITZ

• CHAMONIX *new2025*

• CLARON

• COCÓ

• CRUISE CHENILLE & CRUISE MÉLANGE

• DAMARIS

• DAYDREAMER

• DUCHESSA

• FANTASY

• FARGO *new2025*

• FLASH *new2025*

• GOLD DUST *new2025*

• INFINITY CORD

• NELSON

• PENNY

• PEONIA & GARDENIA

• SAN DIEGO

• SPLIT

• TINTO

• TONGA

• WILLIS

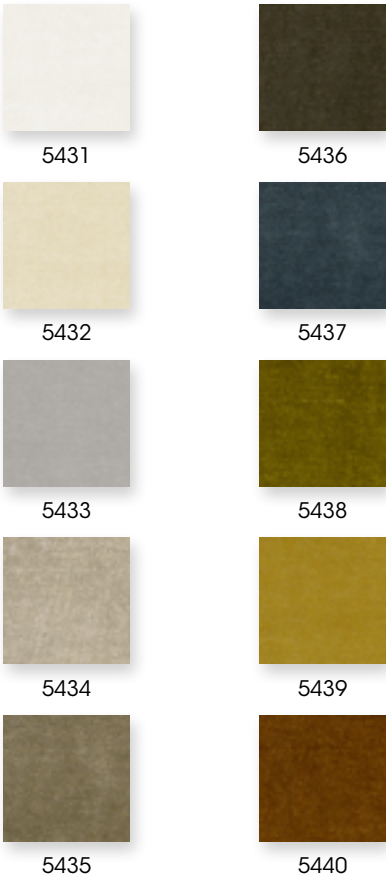
H. 140 CM  
MARTINDALE 40.000  
42% CO • 34% LI • 24% PL

DRY CLEANING SHRINKAGE:  
WEAVE/WARP 2%

 CIGARETTE TEST : BS 5852 • TB 117-2013I

Abba is a compact linen chenille, characterised by the double piece-dyeing that enriches its surface with a mélange effect and enhanced depth. It has a soft hand, obtained through numerous processing steps, and a compact pile thanks to the jacquard technique. The linen thread gives the fabric a slightly wavy and variegated appearance, creating a balance between lustre and opacity.

     | DO NOT RUB ON STRAIGHT





H. 140 CM  
MARTINDALE 50.000  
30% CO • 32% LI • 2% PL • 36% VI

With its unusual “velvet” effect surface, Alcide is a yarn-dyed fabric with an organic, slightly shiny appearance, whose main characteristic is that it has a high, dense pile on the front that reveals, in an unusual contrast, the warp of raw linen mixed with cotton that makes it unique and special. Soft to the touch, it is slightly enlightened by the semi-gloss pile (made of a very fine viscose microfibre) that gives it an irresistible visual effect, expressing a natural authenticity. Gifted with an undeniably contemporary and elegant touch, it is presented in a wide range of colors ranging from warm to cold tones, always characterized by an elegant sobriety.



H. 138 CM  
MARTINDALE 25.000  
67% VI • 33% LI

DRY CLEANING SHRINKAGE:  
WEAVE/WARP 1%

 CIGARETTE TEST : BS 5852 • TB117-2013

Barren is made of a combination of linen and viscose threads. This product is treated with nanotechnology, which makes it resistant to the effect of water wetting, while ensuring higher durability.



H. 138 CM  
MARTINDALE 40.000  
60% VI • 29% CO • 11% LI

This modern yet timeless plain fabric is composed of viscose, cotton and linen. It is characterised by a linen-effect look, a woven structure and a slightly shiny finish. The dense hand, beautiful drape and solidity make Biarritz an essential decoration element, perfect for upholstery. It is available in a wide palette of bright and vivid colours.



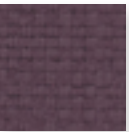
5100



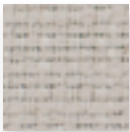
5105



5110



5115



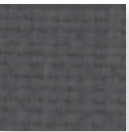
5101



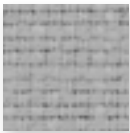
5106



5111



5116



5102



5107



5112



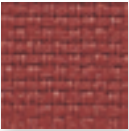
5117



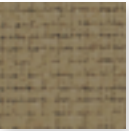
5103



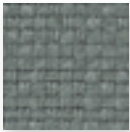
5108



5113



5118



5104



5109



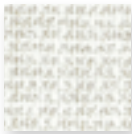
5114



5119

H. 140 CM  
MARTINDALE 40.000  
45% PC • 24% CO • 11% PL • 9% LI • 9% VI • 2% PA  
  
DRY CLEANING SHRINKAGE:  
WEAVE/WARP 2%

Chamonix is characterised by a double warp with an open weft and a textured appearance. Its surface has a woven effect, slightly irregular, which enhances the different shades of the fibres used. The result is a natural and warm appearance, where the processing accentuates the three-dimensionality, giving the fabric a remarkable visual and tactile structure.



5417



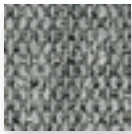
5422



5427



5418



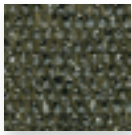
5423



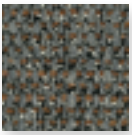
5428



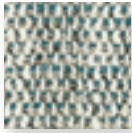
5419



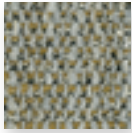
5424



5429



5420



5425



5430



5421

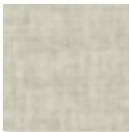
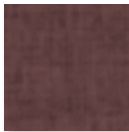


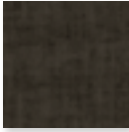
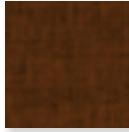
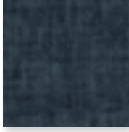
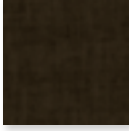
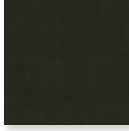


5426

H. 140 CM  
MARTINDALE 100.000  
100% PL

Claron is polyester chenille, whose slubs give it shine and elegance. It is a consistently soft and enveloping fabric, as well as particularly strong. It is treated with the Quick Clean technique, which ensures a clean look by not retaining stains.



				
5333	5338	5343	5348	5353
				
5334	5339	5344	5349	5354
				
5335	5340	5345	5350	5355
				
5336	5341	5346	5351	5356
				
5337	5342	5347	5352	

H. 140 CM  
MARTINDALE 35.000  
49% PC • 23% LI • 14% PL • 14% CO

Cocó presents a typical twisted but interrupted effect, given by the random colour repetition and the irregular sequence of the warp note and the weft pattern. It is a very resistant fabric that is refined to be softer to the touch.



6833



6839



6844



6849



6834



6840



6845



6850



6835



6841



6846



6836



6842



6847



6837



6843



6848



# CRUISE CHENILLE & CRUISE MÉLANGE

cat. C - 241

CRUISE CHENILLE  
H. 140 CM  
MARTINDALE 50.000  
67% PL RECYCLED •  
24% PC • 9% CO

CRUISE MÉLANGE  
H. 140 CM  
MARTINDALE 40.000  
58% PL RECYCLED •  
42% PL

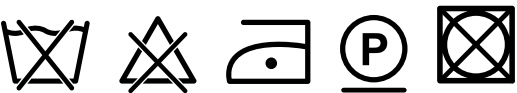
WATER CLEANING SHRINKAGE:  
WEAVE/WARP 2,5%

Cruise is a young and fresh collection, characterized by intense colors and soft touch textures. Sustainability is the common theme of all the various fabrics, in fact the chenille of the Cruise Chenille & Mélange items is made from recycled polyester from yarn production waste or leftovers.



H. 140 CM  
MARTINDALE 25.000  
37% LI • 33% VI • 14% PL • 13% CO • 3% PC

The noble fibre of linen, which makes this product elegant and comfortable, is mixed with other materials. The structure features a combination with an effect yarn in the warp that creates a three-dimensional play of colours with a glossy-matt effect, producing true colour vibrations with metallic highlights.





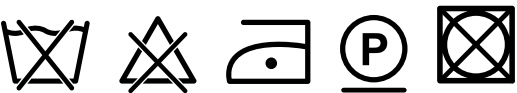
H. 140 CM  
MARTINDALE 45.000  
32% CV • 26% CO • 22% PL • 20% PAN

Daydreamer impresses with its super soft touch in a sophisticated multicolour look, which blends perfectly into any interior. The yarns with a fine chenille component were elaborately spun in several colour shades. They give the fabric a poetic look with a pleasantly soft yet hard-wearing surface. The colour palette shows polychrome and lively tonalities, from elegant natural shades and delicate pastels to deep intense alternatives.



H. 140 CM  
MARTINDALE 35.000  
75% CO • 25% PL (PILE 50 % PL • 50% CO)

Velvet with a silky and noble appearance, thanks to a 100% combed and twisted cotton pile.  
The density of the pile guarantees total coverage.  
The very high quality of the cotton fibre gives it a refined and modern natural brightness, and the structure of the pile becomes an essential basis of tear and seam resistance.



					
5233	5238	5244	5250	5255	5260
					
5234	5239	5245	5251	5256	
					
5235	5240	5246	5252	5257	
					
5236	5241	5248	5253	5258	
					
5237	5243	5249	5254	5259	

H. 140 CM  
MARTINDALE 27.000  
42% PC • 23% CO • 23% VI • 6% LI • 6% PL

DRY CLEANING SHRINKAGE:  
WEAVE/WARP 2%

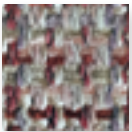
This very particular fabric is technically created on a double beam to give maximum stability and resistance to the surface.  
The soft hand is obtained by using a chenille yarn and, at the same time, the fabric is characterised by a touch of shine thanks to the metallic look of a yarn inserted with a certain irregularity to give movement.  
Fantasy is vibrant and dynamic and is available in different colours ranging from neutral tones to more vibrant shades.



5088



5093



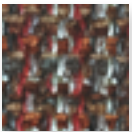
5098



5089



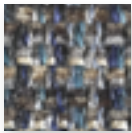
5094



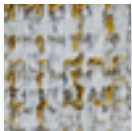
5099



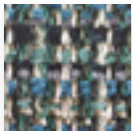
5090



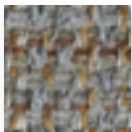
5095



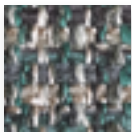
5091



5096



5092

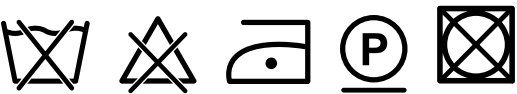


5097

H. 140 CM  
MARTINDALE 30.000  
32% CO • 28% VI • 25% PL • 15% LI

DRY CLEANING SHRINKAGE:  
WEAVE/WARP 1,5%

Fargo is a jacquard chenille fabric with a canneté effect, featuring high-quality yarns that create a soft surface and intricate texture. The fine stripes produce a light and shadow effect that draws attention. It is available in a wide range of colors, from neutral and sophisticated tones, perfect for modern styles, to warmer and more vibrant shades. This versatility makes it ideal for upholstering sofas, armchairs, and cushions, offering multiple combination and decoration options.



H. 140 CM  
MARTINDALE 50.000  
64% PL • 35% PP • 1% EA

DRY CLEANING:  
WEAVE/WARP 2%

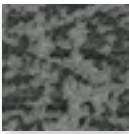
 CIGARETTE TEST : BS 5852 • TB117-2013

Flash is a bi-elastic fabric with a matelassé appearance, created by weaving tens of thousands of synthetic yarns. The weave has raised patterns, the inner padding is soft and fluffy and combined with a lightweight polyester base fabric to create a three-dimensional effect. The fabric is produced on circular looms that have been modified to process at low speed, thus increasing density and wear resistance. It is then treated at high temperatures to increase its volume and softness.

     | DO NOT RUB ON STRAIGHT  
USE ONLY SOFT CLEANERS



5431



5445



5441



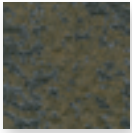
5446



5442



5447



5443



5448



5444

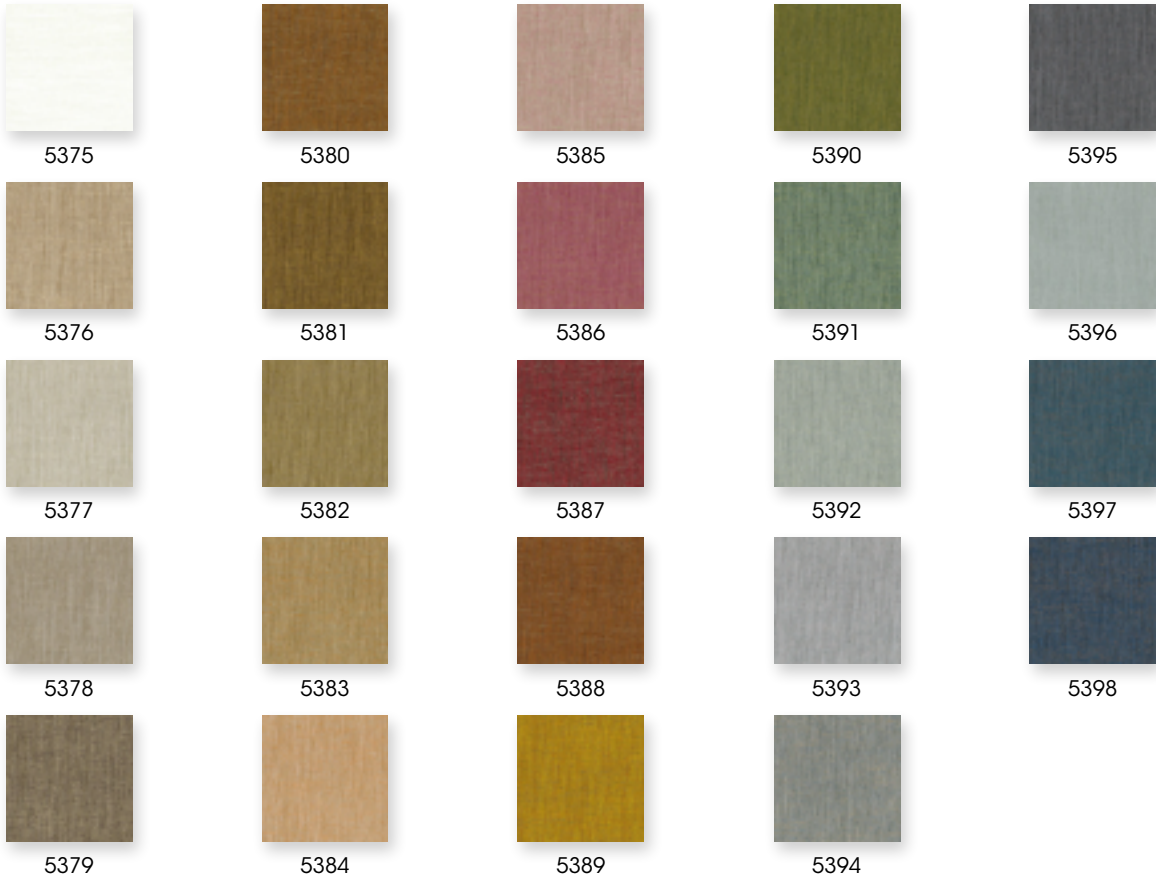


5449

H. 140 CM  
MARTINDALE 30.000  
68% PL • 32% CO

 CIGARETTE TEST : BS 5852

Gold Dust is a fabric made of a mix of cotton and polyester, which combines a twill weave with a multicoloured mélange, creating a shiny effect. The 28 colour shades include vibrant shades, together with a selection of natural and metallic tones.





# INFINITY CORD

cat. SP - 236

H. 148 CM  
MARTINDALE 50.000  
83% PL • 17% PC (PILE 100% PC)

STAIN-RESISTANT YARN NOT CHEMICALLY TREATED

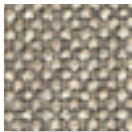
The Infinity Cord ribbed pattern refers to the most classic sportswear fabric of the past and allows for a casual, deconstructed style.  
The special technologies used in the production of the yarn allow an easy maintenance even in case of stubborn stains, it is resistant and has a very high light fastness.  
The palette of bold colours adds personality to any room.



H. 140 CM  
MARTINDALE 100.000  
80% CO • 20% VI

VERTICAL REPEAT 21 CM  
HORIZONTAL REPEAT 23 CM

Nelson is a chenille yarn playing with contrasts, thus creating a three-dimensional look, thanks to a fine, shimmering warp and a bulk yarn. The result is a rustic-looking weave reminiscent of tree bark.



5366



5367



5370



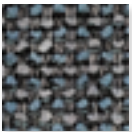
5372



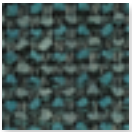
5371



5373



5368



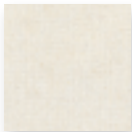










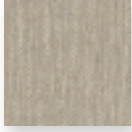
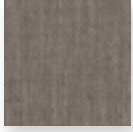
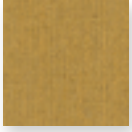
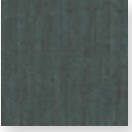

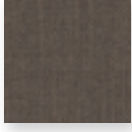

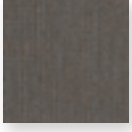
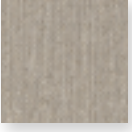
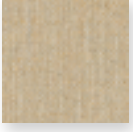
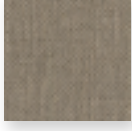
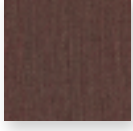
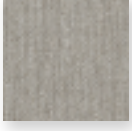
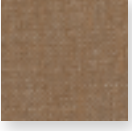
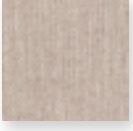
5369



H. 140 CM  
MARTINDALE 24.000  
40% VI • 20% PL • 20% LI • 20% CO

Penny is a fabric with a variegated look due to the combination of light viscose and brown linen fibres which are then given their colour in a single dye bath. Soft and smooth, it has a pleasant touch. It also features reflective highlights and a diagonal with slight colour contrasts for a three-dimensional effect.



					
6704	6709	6714	6719	6724	6729
					
6705	6710	6715	6720	6725	
					
6706	6711	6716	6721	6726	
					
6707	6712	6717	6722	6727	
					
6708	6713	6718	6723	6728	

PEONIA

H. 138 CM

MARTINDALE 30.000

39% CO •

33% LI • 28% VI

GARDENIA

H. 138 CM

MARTINDALE 30.000

52% CO •

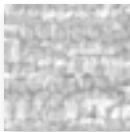
26% VI • 22% LI

Pair of coordinated natural articles made on a twisted linen warp and woven with a specifically constructed yarn twisting three threads of different composition of viscose linen and cotton.

Piece-dyeing and basket finishing allow the yarns to be “unravelled”, giving the fabrics the appearance of velvet while maintaining the strength characteristics of jacquard fabric.

Peonia has a false plain pattern with an irregular weave enhanced by the creativity yarn with shiny reflections of the linen and opaque reflections of the viscose chenille. The result is a fabric with a vintage feel and a refined, fine appearance.

Gardenia has an all-over geometric design that is skilfully shaded and enhances the irregularity of the chenille yarn, creating a very elegant antique velvet effect.



Peonia 5120



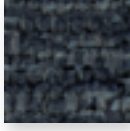
Peonia 5121



Peonia 5122



Peonia 5123



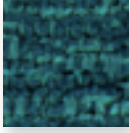
Peonia 5124



Peonia 5125



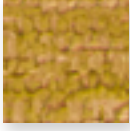
Peonia 5126



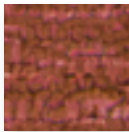
Peonia 5127



Peonia 5128



Peonia 5129



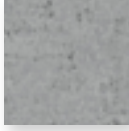
Peonia 5130



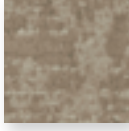
Peonia 5131



Gardenia 5144



Gardenia 5145



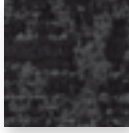
Gardenia 5146



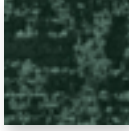
Gardenia 5147



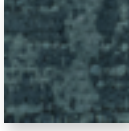
Gardenia 5148



Gardenia 5149



Gardenia 5150



Gardenia 5151



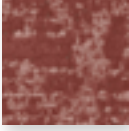
Gardenia 5152



Gardenia 5153



Gardenia 5154



Gardenia 5155

H. 140 CM  
MARTINDALE 24.000  
48% PC • 23% WO • 12% PL • 10% PA • 7% CO

DRY CLEANING SHRINKAGE:  
WEAVE/WARP 2%



Made up of a plot mainly in wool, San Diego stands out for its twine with a pleaseant irregularity of colours. This fabric is characterised by an alternation of lights and darks that play together in a harmonuious way, without the prevalence of a colour on the others. This geometry creates a beautiful and balanced effect that makes this fabric suitable for contemporary furniture.



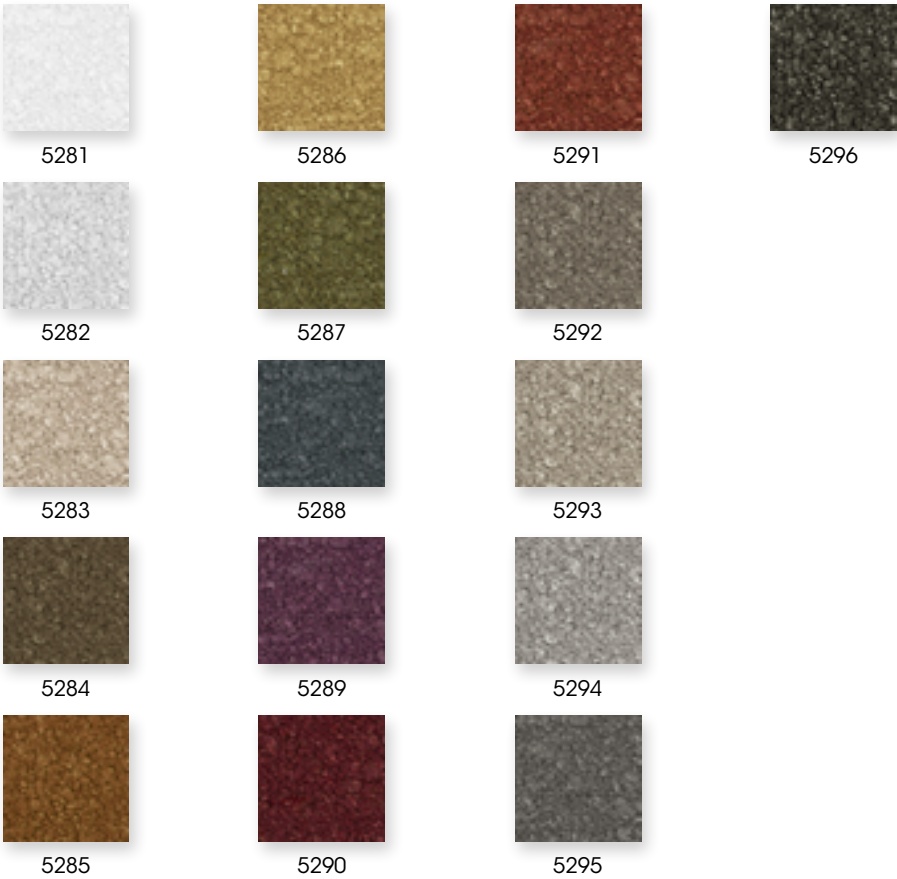
H. 140 CM  
MARTINDALE 60.000  
66% PP RECYCLED • 34% PL

CLEANING SHRINKAGE:  
WEAVE/WARP 2%

Bouclé fabric characterised by small ripples obtained by weaving two different thread tensions that form a series of wavy curls spaced at regular intervals, creating a structure with strong and pleasing contrasts in appearance and touch offering an irresistible visual effect. Irregularity and brilliance make it a bouclé with a lively personality, soft and voluminous, declined in a wide range of shades that includes bright colours and classic neutral tones. It is made of recycled polyester from yarn waste or leftovers.



DO NOT RUB ON STRAIGHT



H. 140 CM  
MARTINDALE 28.000  
42% PES • 32% CV • 26% CO

Tinto is an upholstery fabric which is soft to the touch, thanks to the chenille thread in the weave, as well as also being very sturdy.  
With a warm and enveloping appearance, it is associated with a yarn in the weft which allows obtaining a three dimensional effect of colours, it is offered in different shades, all highly refined.





H. 140 CM  
MARTINDALE 22.000  
80% PL • 20%VI

Tonga is a yarn-dyed fabric with a very important appearance, rich, slightly iridescent, whose contrasting yarns create a fine structure with a firm and stable hand. A tangle of trees and colours, ranging from the most delicate to the most intense shades, animated by evident but always tone-on-tone contrasts, gives the rooms a sense of harmony and serenity; these characteristics, combined with a slight movement of the surface and the richness of the material, are the distinctive features of the fabric.



5194



5199



5195



5200



5196



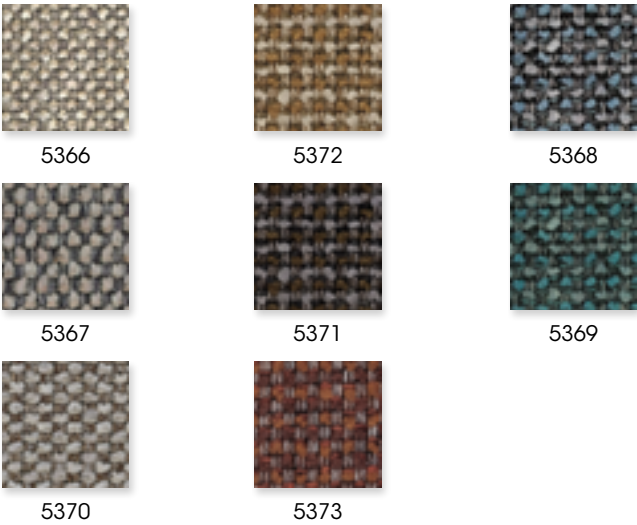
5197



5198

H. 140 CM  
MARTINDALE 50.000  
33% CO • 20% PL • 18% PC • 17% WO • 12% LI

Willis is composed by thick chenille, bouclé, and knitted yarns woven together to create a polychromatic texture that is soft, stretchy, and durable.  
This fabric creates slubs that may overhang: they are part of the textile design and should not be considered as defects.



# REMOVING STAINS FROM TEXTILE

Giorgetti is denoted for its careful attention to detail in the choice of its fabrics, which tends mainly towards natural fibres of the topmost quality, as in its velvets, silks and linens.

Sometimes, slight differences in shades can be seen in the textile when it covers a large surface but, in conformance with the traditional machining techniques, fabrics which are dyed in the yarn can overlap in the weave and the warp giving the yarn its structure and consistency which render the same fabric so precious. In order to keep the characteristics of the fabrics at their best, the washing and maintenance instructions shown in the manual must be followed to the letter. Giorgetti is not answerable to any improper treatments. Immediately dab the stain with a clean, white cloth; if necessary, remove whatever has spilled with a spoon. Clean the stain by working from the edge towards the centre to prevent a halo from forming.

The instructions for removing stains according to a specific table are given below and in the following page.

Always make sure that a clean absorbent cloth is placed under the stain before attempting to clean it.

When using solvents, never use them directly on the stain, pour them onto a clean, white cloth first.





# REMOVING STAINS FROM TEXTILE

Coffee, tea, chocolate, egg, beer, cosmetics: dab with warm water then wash with neutral soap; if the stain persists, dab with ammonia diluted to 5% or 90° ethyl alcohol.

Liqueurs, alcohol, drinks, wine: dab with water and diluted or liquid detergent.

Wash the area with neutral soap.

Pen, chewing gum, shoe polish: dab with absorbent cloth soaked in 90° ethylic alcohol or mineral or vegetable type turpentine.

Grass, dirt: dab with warm water, wash the stain directly with neutral soap.

Jams, syrups, fruit juices: dab with warm water, wash directly with neutral soap; if the stain persists, dab with 90° ethylic alcohol.

Oil, grease: dab with trichloroethylene or perchloroethylene or with a dry stain remover.



These stain removal tips are to be used only as a suggested guide.  
Giorgetti accepts no liability for damage from the use of these suggestions.

## 4. LEATHERS AND SADDLE LEATHER

- INTRODUCTION
- ANILINA LEATHER AND ANILINA NUBUCK LEATHER PRESERVATION
- KEEP YOURLEATHER LOOKING NEW
- SADDLE LEATHER
- ANILINA NUBUCK
- ANILINA SENSE
- PELLE
- PELLE PLUS
- POLYGON

# INTRODUCTION

Sometimes, natural leather can have rough areas or surface scars and imperfections which are typical characteristics of the hide and simply confirm its authenticity. A special kit with cleaning products, which also helps to protect the leather, is available from Giorgetti and, if used correctly and applied with the proper sponge and cloth, helps to care for and maintain the natural features of the product.

The preservation of the leather, however, requires proper continuous care. It must not be placed in direct sunlight or in intensive light. It must not be placed near direct heat sources (radiators, fireplaces, ventilators). For everyday cleaning, regularly dust with a soft cloth or with the proper brush connection of the vacuum cleaner; if necessary, wipe with a soft cloth or a slightly damp sponge. The use of alcohol or other solvents for removing stains is highly inadvisable. Only immediate action can reduce the damage; dab with a damp sponge until it has been completely eliminated, taking as much care as possible to clean with the utmost delicacy, without rubbing.

When cleaning leather, it is important to use a soft, only slightly damp cloth. Excess water may damage the material. After cleaning, it is recommended to let the leather dry naturally, away from direct heat sources, to prevent it from drying out or cracking.





# ANILINE LEATHER AND ANILINE NUBUCK LEATHER PRESERVATION

For normal cleaning of Nubuck leather, it is recommended to use a soft brush or a soft, dry cloth.

Aniline leather should be dusted often with a soft, dry cloth.  
Objects that can scratch the surface must not be used.  
Products with this coating must be handled with great care:  
aniline leather is easily marked.

Bedside rug IRA model: this rug is made up of thin strips in natural saddle leather and can be cleaned with a normal vacuum. In case of any stain, remove it immediately to avoid rings.



# KEEP YOUR LEATHER LOOKING NEW

**Leather Soft Cleaner** is a water-based cleaner that can be used on all leather types. It is effective on most common and water-based and dirt stains. Before using the cleaner on your sofa/furniture, it is recommended to try it on a hidden area.

## INSTRUCTIONS

1. Shake the bottle well before use.
2. Pour Leather Soft Cleaner over a soft sponge and compress it to produce foam.
3. Apply the foam to the leather surface in a circular motion.  
If the sponge becomes particularly dirty, it must be cleaned before cleaning.
4. Remove excess foam and dirt with a clean cotton cloth or household paper.
5. For stubborn dirt or colour stains such as those caused by blue jeans, it is recommended to use specific Unifers products.
6. When the surface is clean and dry, apply Leather Protection Cream to renew the protective effect on the leather.

Keep at room temperature. Keep out of the reach of children.

Content: <5% non-ionic surfactants, parfum, Methylisothiazolinone; Benzisothiazolinone; 2 - bromo - 2 - nitropropane - 1, 3 - diol; Octylisothiazolinone.



# KEEP YOUR LEATHER LOOKING NEW

**Leather Protection Cream** is a water-based protective cream for all leather types except nubuck and suede. It provides excellent protection against oil, water and alcohol stains, as well as against dirt that is deposited daily; it helps to keep the leather soft and hydrated. Careful periodic maintenance prevents cracking of the leather. It is recommended to clean and protect leather furniture at least every six months. In the case of aniline leather sofas, more attentive and frequent maintenance may be required. Before using the product on your sofa/furniture, it is recommended to try it on a hidden area.

## INSTRUCTIONS

1. Shake the bottle well before use.
  2. Pour a little Leather Protection Cream onto a clean, soft cloth and wipe it off slightly on the leather surface. Treat 2 times the areas of major use like the armrests, seats and backs.
  3. Allow to dry for 30 minutes.
  4. If necessary, lightly polish the leather with a soft, clean cloth.
- Keep at room temperature. Keep out of the reach of children.

**Ink Away** eliminates stains and marks of pen, ink and lipstick from pigmented leather surfaces. Not suitable for aniline, nubuck, suede and saddle leather. Before using the product on your sofa/furniture, it is recommended to try it on a hidden area.

## INSTRUCTIONS

1. Remove the screw cap and twist the base until a small amount of product appears.
2. Pass the stick repeatedly over the area to be cleaned by applying light pressure with circular movements.
3. Leave it to act on the stain for about 30 seconds.
4. Then remove the product with a clean, dry cloth by applying light pressure.
5. Clean the residues with Leather Soft Cleaner.
6. Apply Leather Protection Cream by gently rubbing the leather with movements circular, then let dry.

Avoid contact with eyes. Keep out of reach of children.  
Content: 5% -15% non-ionic surfactants, soap.



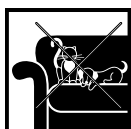
# KEEP YOUR LEATHER LOOKING NEW



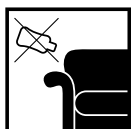
Place the leather furniture at a minimum distance of 30 cm from the heat sources.  
Prolonged exposure to heat or radiators can cause dryness, hardening and subsequent cracking of the leather.



Do not use chemicals or paints near your leather sofa. Keep products such as lacquers, solvents, bleach, glue and detergents away from your sofa, take care to cover it. Avoid all products containing solvents or oils, as they could damage the surface of the leather.



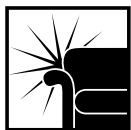
In order to ensure that the leather is maintained over time, it is recommended to apply a preventive treatment.  
When the sofa/furniture is new, apply Leather Protection Cream to the surface of the leather to increase resistance to stains and dirt.  
Pay particular attention to the most stressed areas (seats, backrests and armrests).



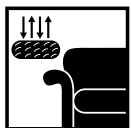
All materials fade in contact with sunlight.  
Aniline leathers are particularly sensitive to sunlight, do not place near windows or outdoors.



Remove the dust weekly with a damp cloth or vacuum it using the soft brush supplied with your vacuum cleaner.  
Thanks to the compact structure of the leather fibres, the dust particles do not penetrate but remain on the surface, allowing a complete removal. This feature makes the leather a particularly suitable material for people suffering from dust allergy.



As a general rule, clean your leather furniture with Leather Soft Cleaner at least every 6 months to remove dirt and the gradual accumulation of perspiration and body grease.  
After cleaning, apply the Leather Protection Cream again to renew the level of protection.



Avoid pets getting on sofas. Their nails can ruin the leather.  
Their saliva as well as their body fluids are very aggressive.



# SADDLE LEATHER

Leather is used to dress and enhance chairs, armchairs, small armchairs, sofas, tables, beds and accessories, for finished products of undisputed quality.

Giorgetti has always implemented an accurate selection process that allows it to identify and rely on only the most qualified suppliers who, for their professionalism and skills, have earned a primary role in top-level tanning.

The leather supplied is exclusively “full grain”, obtained from the noble parts of the animal, for a final product of high intrinsic quality, capable of restoring and preserving the softness and beauty of the material over time.



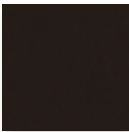
Suitable for different applications, Nubuck is a leather with a nap surface that is very soft to the touch, available in a wide range of colours. Its distinctive feature is the naturalness, highlighted by slight flaws and colour variations that have to be considered as a quality and normal characteristic of the product.



Aniline leather with a natural look and the feel of peach skin. It is known for its exceptional softness, which produces an immediate sensory experience and is the result of choosing from the best hides available. Any variations in colour or surface imperfections should be considered desirable and are normal features of a full-grain product, where the original traits of the animal's skin are maintained and enhanced.



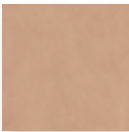
9244



9248



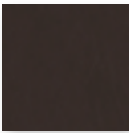
9245



9249



9246



9250



9247



9251

Thanks to the careful selection, it gives an important contribution to the enhancement of the upholstery produced with the elegance of a tailor-made, customized garment: seats, armchairs, easy chairs, sofas and beds. Our collection has been extended to include new selected colours - the so-called "classics" and some more fashionable shades. All the colours easily match with the fabrics in the collection.

					
9101	9109	9118	9137	9149	9166
					
9103	9110	9119	9138	9159	
					
9104	9111	9122	9139	9160	
					
9106	9116	9127	9147	9162	
					
9108	9117	9128	9148	9163	

Soft and natural, this leather can meet the demands of exclusivity and maximum quality of a product, from chairs, to armchairs and couches. Natural shades, from white to mahogany, to create unique combinations and hues with the fabrics present in our collections.

			
9313	9318	9323	9328
			
9314	9319	9324	9329
			
9315	9320	9325	9330
			
9316	9321	9326	9331
			
9317	9322	9327	9332

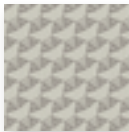
Polygon is a leather plus processing made with a high precision laser machine. The all over graphics, created by Giorgetti, give the leather an elegant and sophisticated chiaroscuro effect.



9333



9338



9343



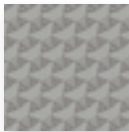
9348



9334



9339



9344



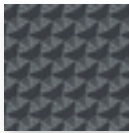
9349



9335



9340



9345



9350



9336



9341



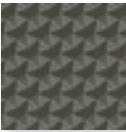
9346



9351



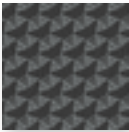
9337



9342



9347



9352



## 5. TAILORING FABRICS

### • ALONG *new2025*

- ALPACA
- GLAZE
- JAMES
- JORIT
- KALIPE'
- LOUNET
- MATISSE
- MIKADO & MIKADO CLOUD
- PEBLE
- SALIMA
- SATARIA
- SPUMA
- TERRAZZO

### • VALENZANO *new2025*

- WILBUR

H. 140 CM  
MARTINDALE 30.000  
51% CO • 24% VI • 15% PC • 10% LI

DRY CLEANING SHRINKAGE:  
WEAVE/WARP 2%



4123



4126



4129



4124



4127



4130



4125

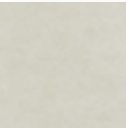


4128



4131

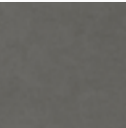
H. 140 CM  
MARTINDALE 18.000  
44% CO • 39% WP • 17% WV  
(PILE 70% WP • 30% W V)



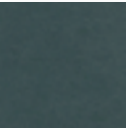
4084



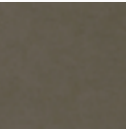
4087



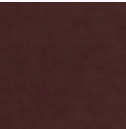
4085



4088

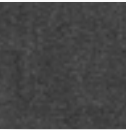


4086



4089

H. 140 CM  
MARTINDALE 200.000  
50% VI • 45% PL • 5% CO  
(PILE 70% VI • 30% PL)



4076



4080



4077



4081



4078



4082



4079



4083

H. 140 CM  
MARTINDALE 27.000  
50% PES • 39% PC • 11% VI



4000



4003



4001



4004



4002



4005



H. 140 CM  
MARTINDALE 40.000  
65% PC • 35% PL

DRY CLEANING:  
WEAVE/WARP 2%



4048



4051



4049



4052



4050



4053

H. 140 CM  
MARTINDALE 40.000  
77% PC • 22% PL • 1% VI

CLEANING SHRINKAGE:  
WEAVE 3% • WARP 4%



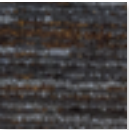
DO NOT WRING  
DO NOT RUB ON STRAIGHT



4100



4103



4106



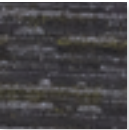
4109



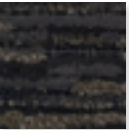
4101



4104



4107



4110



4102



4105



4108



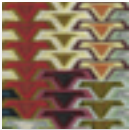
4111

H. 140 CM  
MARTINDALE 10.000  
75% CO • 25% PL

Repeat: cm ↔ 36, cm ↕ 77



4074



4075

H. 146 CM  
MARTINDALE 10.000  
71% PL • 29% CO

Repeat: cm ↔ 93, cm ↑ 145



4076



4080



4077



4081



4078



4082



4079



4083

# MIKADO & MIKADO CLOUD

cat. EX

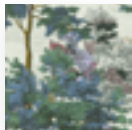
MIKADO  
H. 140 CM  
MARTINDALE 10.000  
100% PL

Repeat: cm ↔ 145, cm ↑ 85



MIKADO CLOUD  
H. 140 CM  
MARTINDALE 10.000  
100% PL

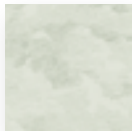
Repeat: cm ↔ 146, cm ↑ 62



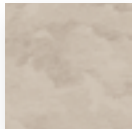
Mikado 4070



Mikado 4071



Mikado Cloud 4072



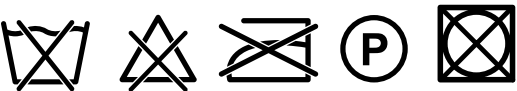
Mikado Cloud 4073



PEBBLE

cat. SP

H. 140 CM  
MARTINDALE 50.000  
40% PC • 29% RA • 15% PA • 9% PL • 7% WO



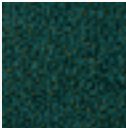
4034



4037



4035



4038



4036



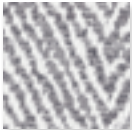
4039

H. 140 CM  
MARTINDALE 30.000  
62% CO • 13% PC • 12% PL • 10% WO • 3% PA

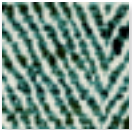
CLEANING SHRINKAGE:  
WEAVE/WARP 2%



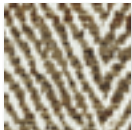
4090



4093



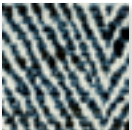
4096



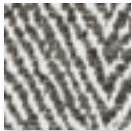
4091



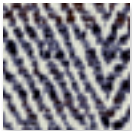
4094



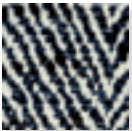
4097



4092



4095



4098

H. 140 CM  
MARTINDALE 26.000  
42% CO • 22% LI • 36% VI



4040



4044



4041



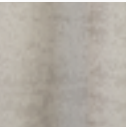
4045



4042



4046



4043



4047

H. 140 CM  
MARTINDALE 50.000  
100% PL (PILE 60% ACRILICO • 40% VISCOSE)

Repeat: cm ↔ 35, cm ↕ 35

DRY CLEANING SHRINKAGE:  
WEAVE/WARP 1%



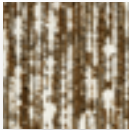
4068



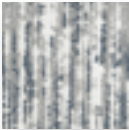
4069

H. 140 CM  
MARTINDALE 40.000  
41% CO • 39% PL • 14% PC • 6% WV

RECYCLED COTTON  
CIGARETTE TEST : BS 5852 • TB 117 - 2013



4132



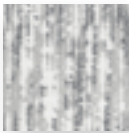
4135



4133



4136



4134



4137

H. 140 CM  
MARTINDALE 22.000  
50% VI • 29% PL • 21% CO

CLEANING SHRINKAGE:  
WEAVE/WARP 3%



4112



4115



4118



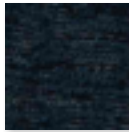
4121



4113



4116



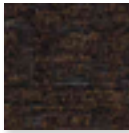
4119



4122



4114



4117



4120



# 6.TAILORING LEATHER

• PELLE SATIN *new2025*

Pelle Satin is characterised by a pearlate surface that gives any leather a luminous appearance. High performance, rich palette of soft and sophisticated shades.



## 7. OPEN - AIR FURNITURE

- PRODUCTS
- PROTECTIVE SLIPCOVER
- WOOD
- MARBLE
- METAL

# OPEN - AIR FURNITURE

## PRODUCTS

Store products in a sheltered place during winter or when not in use for long periods. Regular cleaning is recommended, more frequently in locations with high humidity and marine climate.

Clean surfaces with a soft, non-abrasive cloth using water or neutral detergents. Prolonged and uninterrupted exposure to intense UV radiation or very cold temperatures can affect the appearance.

## PROTECTIVE SLIPCOVER

All the products of the Open-air collection have been studied for outdoor use. It is however good practice to protect these furnishings with the Giorgetti protective slipcovers, made with water-repellent fabric.

The covers are equipped with a clip closing system that makes it possible to secure the cover around the base of the furniture piece, preventing it from flying away. In order to increase the circulation of air and avoid the formation of condensation, the covers are not made to floor length.

Use a soft cloth and warm water and, if necessary, use a gentle detergent to clean the protective slipcovers.

Rinse with clean water. The protective slipcovers must be thoroughly dry before using them, to avoid moisture build-up or the growth of mould.

Although the materials and processing methods have been carefully chosen for their characteristics and performance in outdoor environments, weather conditions can significantly alter the original state of the furniture.





# OPEN - AIR FURNITURE

## WOOD

Wood is a live material whose natural characteristics remain throughout any treatment, even when it is carved or moulded according to the shapes studied by the designer's creativity. For this reason, the veining and shades of the colours may sometimes be different but this does not mean that the wood is faulty, it simply reflects its uniqueness.

For maintenance, a cloth or a slightly damp sponge are sufficient.

Abrasive products or anything containing solvents and/or alcohol are to be avoided. For dust, a damp cloth is advised. For greasy finger marks, a sponge soaked in water and washing up liquid can be used, followed by a cloth dampened with water. Avoid using any detergents which may contain pure ethyl alcohol.

The colour of wood largely depends on certain substances it contains, known as extractives.

The colour of these substances is modified by exposure to air and light, so that the original colour of every furniture undergoes more or less marked transformations over time.

## MARBLE

Regular cleaning is necessary using a cloth dampened with lukewarm water.

In the case of stains caused by liquid and/or greasy substances, remove immediately by dabbing with an absorbent cloth. Then clean the entire surface with a cloth dampened with lukewarm water.

Avoid the use of solvents, silicone cleaners and abrasives.

Maintenance with commercially available water-repellent waxes is recommended to prevent stains and marks.

## METAL

Products sold commercially for delicate surfaces are recommended.

Alcohol, solvents and abrasive detergents must be avoided.



## 8. OPEN - AIR FABRICS

- ALPINA
- APOLLODORO
- CHECK
- CIMA
- ERFOUD
- GOBI
- KEY WEST
- MAGNETIC
- MARINA
- MERIDA
- MONTEREY
- ORCHIDEA
- PADANG
- PELLE PERFORMA
- PIED DE POULE
- PLUTARCO
- POOL RECYCLED
- SAND
- SHOCK
- SICILY
- TULUM



H. 140 CM  
MARTINDALE 100.000  
54% PC • 46%PL

Light resistance: 6  
Finishing: water-repellent



1097



1116



1098



1117



1107



1127



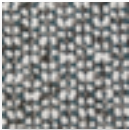
1108



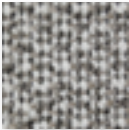
1139

H. 140 CM  
MARTINDALE 100.000  
95% PP • 5%PL

Light resistance: 7  
Finishing: anti-bacterial, hypoallergenic,  
mould resistant, antifungal,  
resistant to chlorinated water and salt



1109



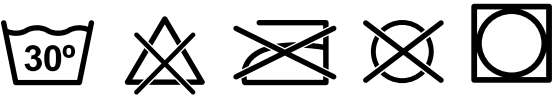
1128

CHECK

cat. H - OPEN-AIR 4

H. 141 CM  
MARTINDALE 65.000  
83% PP • 17% PC  
  
VERTICAL REPEAT 3 CM  
HORIZONTAL REPEAT 3 CM

Light resistance: 7  
Finishing: mould resistant, breathable, oil  
and water repellent, stain resistant



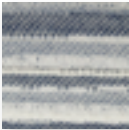
1136



1137

H. 138 CM  
MARTINDALE 20.000  
100% DYED ACRYLIC

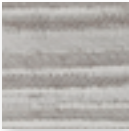
Light resistance: 7  
Finishing: oil and water-repellent, stain resistant,  
mould resistant, rot-proof, bad weather and sun  
light resistant



1095



1106



1125



1135

H. 140 CM  
MARTINDALE 40.000  
100% DYED ACRYLIC

Light resistance: 7  
Finishing: oil and water-repellent, stain resistant,  
mould resistant, rot-proof, bad weather  
and sun light resistant



H. 138 CM  
MARTINDALE 45.000  
100% PP

Light resistance: 6  
Finishing: stain resistant, hypoallergenic, does not change color in contact with water, salt and sunscreen, bad weather resistant, antipilling



1121



1132

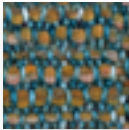


KEY WEST

cat. F - OPEN-AIR 6

H. 140 CM  
MARTINDALE 30.000  
94% PP • 6% PC

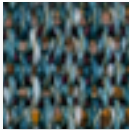
Light resistance: 7  
Shrinkage: 2%  
Finishing: mould resistant, oil and water resistant



1167



1171



1168



1172



1169



1173



1170



1174

# MAGNETIC

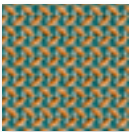
cat. F - OPEN-AIR 6

H. 140 CM  
MARTINDALE 100.000  
100% PL

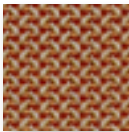
Light resistance: 7/8  
Finishing: fire resistant, resistant to chlorinated water and salt



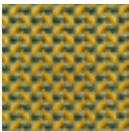
1143



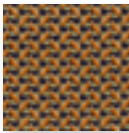
1147



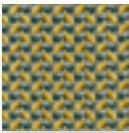
1144



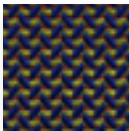
1148



1145



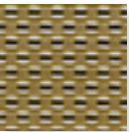
1149



1146

H. 136 CM  
MARTINDALE 20.000  
100% PC

Light resistance: 6  
Shrinkage: 3%  
Finishing: mould resistant, stain resistant,  
water repellent



1150



1153



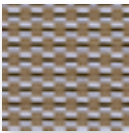
1151



1154



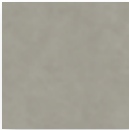
1152



1155

H. 140 CM  
MARTINDALE 100.000  
100% PET ANTIMACCHIA OUTDOOR RECYCLED GRS

Light resistance: 7  
Shrinkage: 1%  
Finishing: recycled and recyclable material  
water repellent, stain resistant, mould resistant



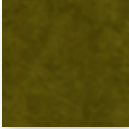
1184



1185



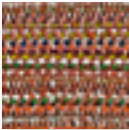
1186



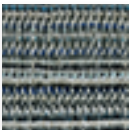
1187

H. 140 CM  
MARTINDALE 40.000  
90% PP • 10% PC

Light resistance: 7  
Shrinkage: 2%  
Finishing: mould resistant, oil and water resistant



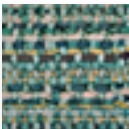
1156



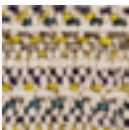
1157



1158



1159



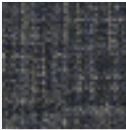
1160

H. 140 CM  
MARTINDALE 40.000  
90% PP • 10% PC

Light resistance: 7  
Shrinkage: 2%  
Finishing: mould resistant, oil and water resistant



1161



1164



1162



1165



1163



1166



H. 133 CM  
MARTINDALE 30.000  
100% PP

Light resistance: 7  
Finishing: hypoallergenic, mould and stain  
resistant, anti-bacterial



1100



1120



1129



1141

# PIED DE POULE

cat. G - OPEN-AIR 4

H. 138 CM  
MARTINDALE 50.000  
100% DYED ACRYLIC

Light resistance: 7  
Finishing: oil and water-repellent, stain resistant,  
mould resistant, rot-proof, bad weather and sun  
light resistant



1096



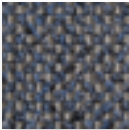
1115



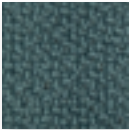
1126

H. 140 CM  
MARTINDALE 50.000  
97% PP • 3% PL

Light resistance: 7  
Finishing: anti-bacterial, hypoallergenic, mould  
resistant, antifungal, resistant to chlorinated water  
and salt



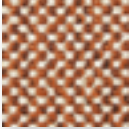
1099



1110



1118



1140

# POOL RECYCLED

cat. SP - OPEN-AIR 6

H. 140 CM  
MARTINDALE 50.000  
100% PET RECYCLED  
  
VERTICAL REPEAT 73 CM  
HORIZONTAL REPEAT 35 CM

Light resistance: 7  
Finishing: stain resistant, mould resistant,  
water repellent



1175



1176



1177



1178

SAND

cat. H - OPEN-AIR 4

H. 140 CM  
MARTINDALE 50.000  
83% PP • 17% PC



1038

Light resistance: 7  
Finishing: mould resistant, breathable, oil and  
water repellent, stain resistant

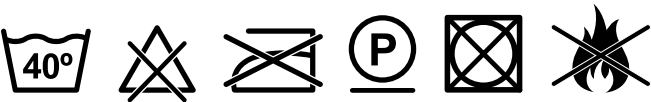


ALICUDI/FILICUDI  
H. 140 CM  
MARTINDALE 50.000  
63% PP • 37% PL

PANAREA  
H. 140 CM  
MARTINDALE 50.000  
95% PP • 5% PL

Light resistance: 6/7  
Finishing: stain resistant, mould resistant,  
anti-bacterial, no pilling, breathable, imo certified

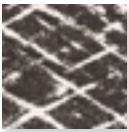
Alicudi, Panarea, Filicudi and Salina, protagonists of the Open-air Sicily collection, are fabrics with exceptional technical qualities characterised by a natural aspect and a pleasant softness. The elegant weaving obtained plaiting different yarns represents the main peculiarity of this product that reproduces a soft mélange effect combined with a special dyeing technique. Realised through environmentally friendly fibres, these textures respect the environment and the humankind: not only they do not release harmful substances for people health, but the materials’ regeneration diminishes the consumption of raw materials, such as water and energy.



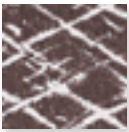
ALICUDI



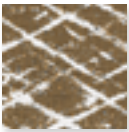
1058



1059



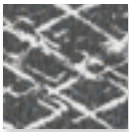
1060



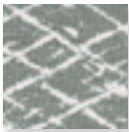
1061



1062



1063



1064

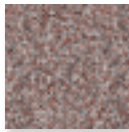
FILICUDI



1072



1073



1074



1075



1076



1077



1078

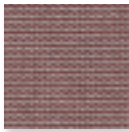
PANAREA



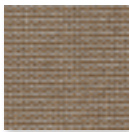
1065



1066



1067



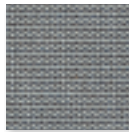
1068



1069



1070

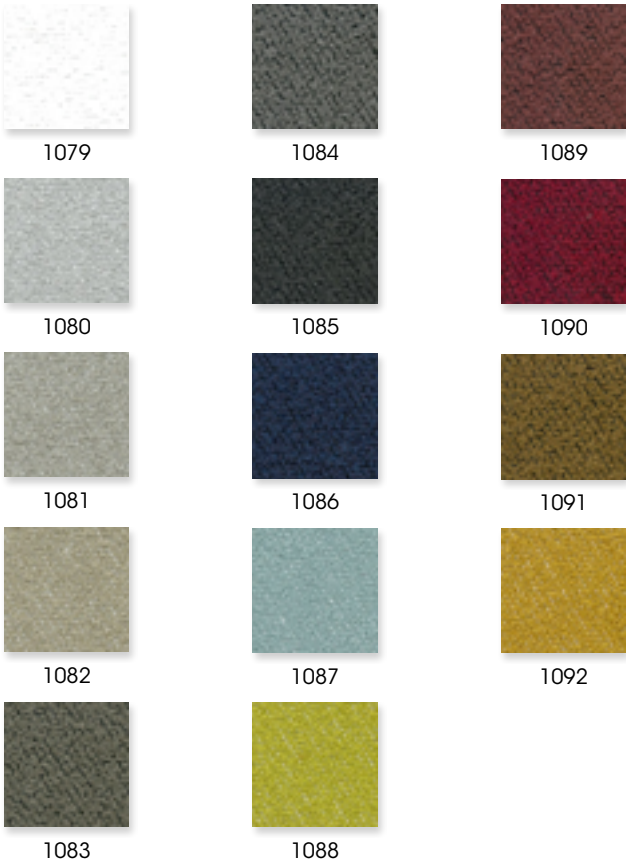
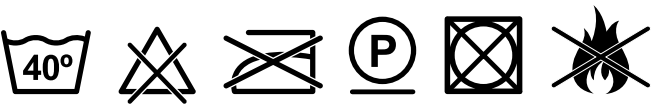


1071

SALINA  
H. 140 CM  
MARTINDALE 50.000  
65% PP • 35% PL

Light resistance: 6/7  
Finishing: stain resistant, mould resistant,  
anti-bacterial, no pilling, breathable, imo certified

Alicudi, Panarea, Filicudi and Salina, protagonists of the Open-air Sicily collection, are fabrics with exceptional technical qualities characterised by a natural aspect and a pleasant softness. The elegant weaving obtained plaiting different yarns represents the main peculiarity of this product that reproduces a soft mélange effect combined with a special dyeing technique. Realised through environmentally friendly fibres, these textures respect the environment and the humankind: not only they do not release harmful substances for people health, but the materials’ regeneration diminishes the consumption of raw materials, such as water and energy.



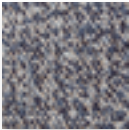


SHOCK

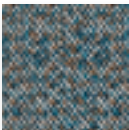
cat. C - OPEN-AIR 4

H. 140 CM  
MARTINDALE 45.000  
100% PP

Light resistance: 7  
Finishing: propylene fabric does not promote the  
formation of mold or bacteria



1102



1112



1122



1131



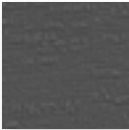
1142

H. 140 CM  
MARTINDALE 30.000  
93% PO • 7% PL  
ANTIMACCHIA OUTDOOR, RECYCLED GRS

Light resistance: 7  
Shrinkage: 1%  
Finishing: recycled and recyclable material  
water repellent, stain resistant, hypoallergenic,  
mould resistant



1179



1180



1181



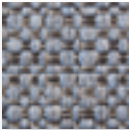
1182



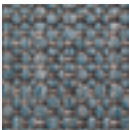
1183

H. 137 CM  
MARTINDALE 56.000  
100% PP

Light resistance: 7  
Finishing: hypoallergenic, mould and stain  
resistant, anti-bacterial



1101



1111



1119



1130

# 9. PELLE OPEN - AIR

- PELLE PERFORMA

Light resistance: 4/5  
Finishing: water-repellent, oil repellent, flammability, does not change color in contact with sweat and sea water, flame retardant

Characterized by very high technical qualities that make it optimal for both indoor and outdoor use, being resistant to water (marine and chlorinated), light and the most extreme exposure situations, Pelle Perfoma features a finish that gives the leather a homogeneous and unchanging appearance over time. Its softness and extreme durability make it suitable for use: residential, hospitality, contract, aviation, and marine. It is available in a wide range of colors.



## 10. ATMOSPHERE

- RUGS
- OPEN-AIR RUGS, VASES

# RUGS

After delivery, open the rug and let it “breathe” for some time in order for the pile to regain its natural beauty and flatten out. If rugs remain packaged for too long, they may be subject to temperature, pressure and humidity conditions that can damage them.

During the first few weeks, the rugs will tend to produce a high amount of fluff. This phenomenon is characteristic of all rugs made of natural fibres, and does not cause any damage to the carpet. Simply vacuum it, always moving the vacuum cleaner in the direction of the pile. All of our rugs are handcrafted so there may be small variations in size. Every rug is different and could be between 1% to 5% larger or smaller than the intended size. There may also be slight chromatic variations between one rug and another.

Make sure the rug is put in a dry area, do not put it in damp spaces such as outdoors, bathrooms or floors below ground such as cellars or basements. If the rug is exposed to the sun over long periods of time, the colours will fade and lose their intensity.

For heavy furniture or with very sharp edges such as metal or glass, it is recommended to use pads between the furniture and the rug. Never put a potted plant on a rug: a water leakage can damage it. An underlay is recommended for all of our rugs so that they will not slip.

When moving the rug, remove all furniture first. We recommend folding the edge of the rug and then pulling on the folded edge. Never pull the rug directly from the edges.

If you need to store your rug for a long period, never fold it, simply roll it and store it horizontally, this will prevent indentations.





# RUGS

Vacuum at least once a week and make sure to vacuum both sides of the rug a couple times a year. Always move the vacuum cleaner in the direction of the pile.

Never use bleach or floor polishers on the rugs.

Giorgetti rugs can never be dry-cleaned or steam-cleaned. In case of light stains such as coffee, tea, milk, chocolate or wine, blot the liquid up as soon as possible and clean before it has the chance to dry.

We recommend sparkling water or a light diluted detergent applied with a clean white towel. Be careful not to use too much water. Do not rub. Work the stain from the outer edge to the centre.

After cleaning, make sure to fully dry the rug with a clean cloth, a fan or a hand blow dryer on a low heat setting. It is important to never wet or soak the carpet completely. Use a soft brush to restore the pile.

In the case of a heavy stains such as grease, ink, mud, blood or chewing gum, we recommend taking the rug to a professional rug-cleaning company.

These stain removal tips are to be used only as a suggested guide. Giorgetti accepts no liability for damage from the use of these suggestions.



# OPEN - AIR RUGS, VASES

## **POLYPROPYLENE**

Material with high resistance to passage, stains, sunlight, water and water with chlorine. Do not bleach.

For daily cleaning, a brushless vacuum cleaner is recommended.

For periodic maintenance, dry cleaning or steam cleaning is recommended.

In case of stains, dab with a clean cloth and use specific detergents.

## **POLYESTER**

100% recyclable, anti-mite, non-toxic and hypo-allergenic material with high resistance to passage, stains, sunlight, water and water with chlorine. Clean with a jet of water, maximum temperature 40°. Easy to dry.

## **VASES**

To obtain a silky feel, some vases are treated with a silicon-based spray.

The effect can be altered by the packaging, but easily restored with a soft cloth.

