

Giro,  
Union plate set  
Assembly instructions

kettal

# Giro, Union plate set

## Description

---

Giro is a collection which can blend into interiors and exteriors due to its tactility and pure lines.

In Giro, we have some variety of shapes, textures and materials (see the difference between the seating items and the coffee and side tables). And still all the items merge harmoniously together to create a warm, tactile and pleasant atmosphere.



## Information

---

### Cleaning Instructions

Use a soft damp cloth, with soap or neutral detergent.  
Do not use alcohol or other solvents.

This symbol on the product or its packaging indicates that it must not be treated as household waste. It should, in fact, be handed in at a recognised collection point for recycling electrical and electronic equipment. For more detailed information about the recycling of this product, please contact your local city office, your household waste disposal service or the shop where you purchased the product.

This product is suitable for indoor and outdoor.

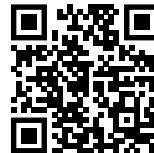
## Warning

---

Bad handling can cause fractures in the furniture.

## Assembly video

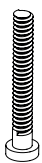
---



## Elements

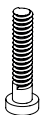
---

A



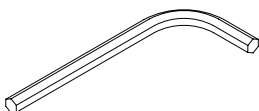
DIN 7380  
M6X45  
2 u.

B

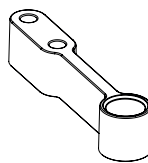


DIN 912  
M6X40  
4 u.

C



F

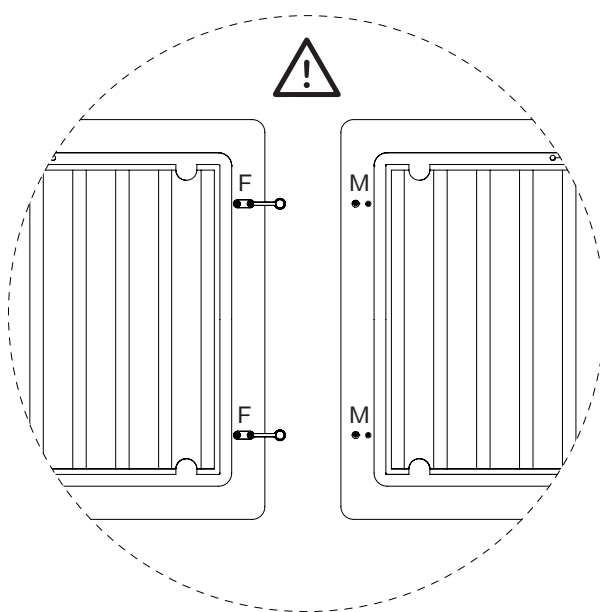
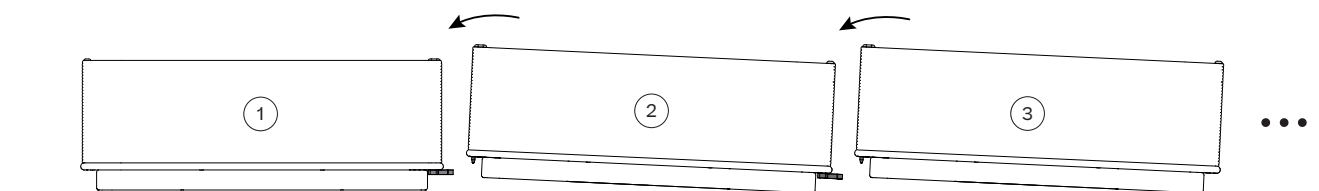


M

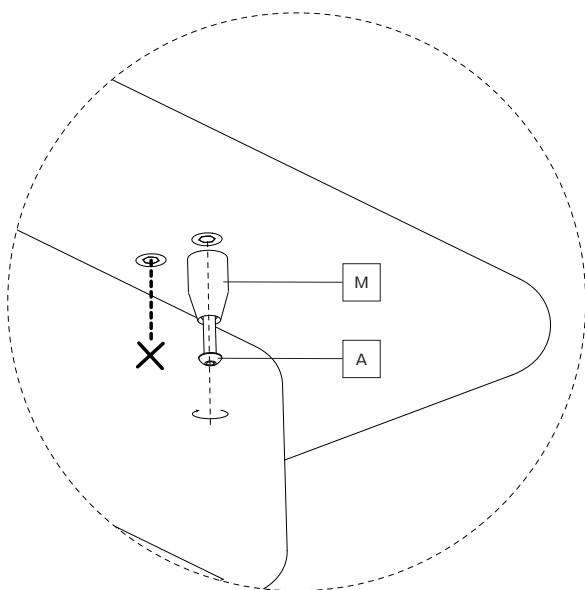


# Giro, Union plate set

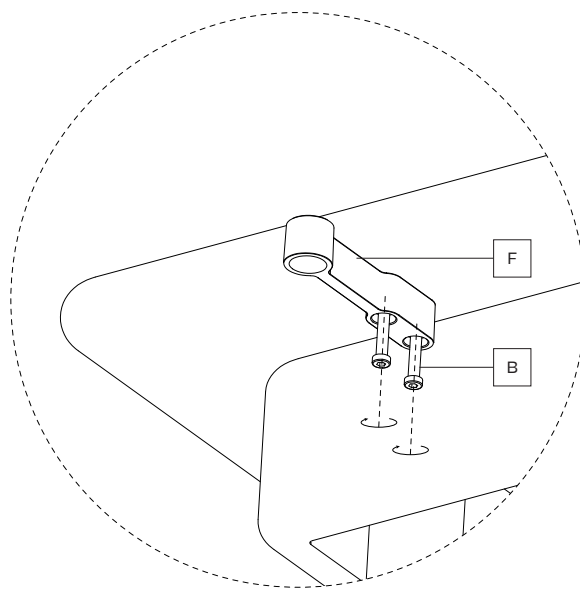
1



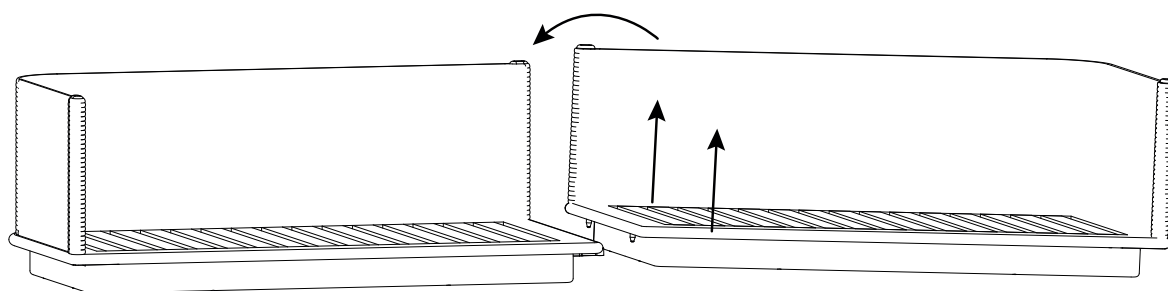
2



3



4



# Giro, Union plate set

Connection examples. Make your own!

