

Gruppi Lavabo/ Washbasin Taps

LIMON

.ELIM422

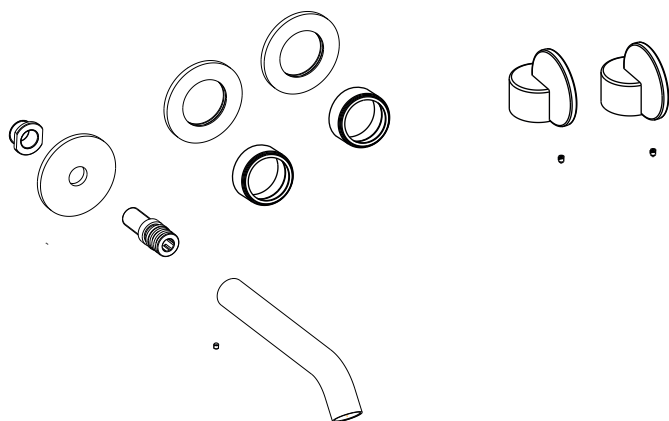
Gruppo lavabo a doppio comando
Washbasin Mixer with dual control



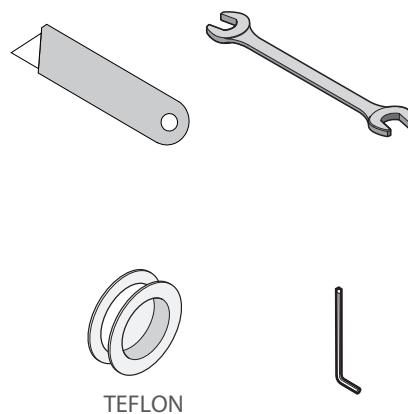
Prima di realizzare l'impianto
consultare la scheda Cod.
16024 e 16018

Before installing consult the
technical sheet Cod. 16024
and 16018

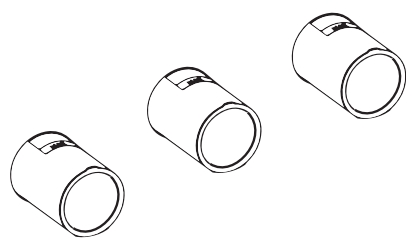
CONTENUTO DELLA CONFEZIONE
PACKAGE CONTENTS



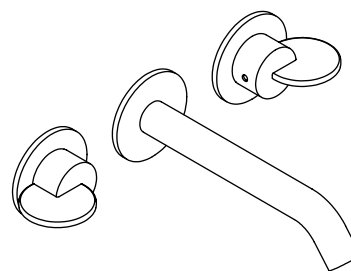
UTENSILI NECESSARI
NECESSARY TOOLS



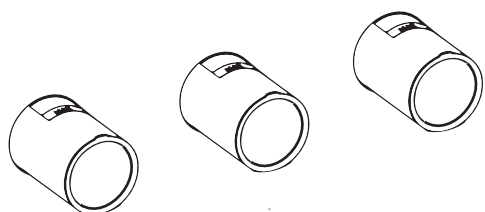
PREDISPOSIZIONE
PREPARATION



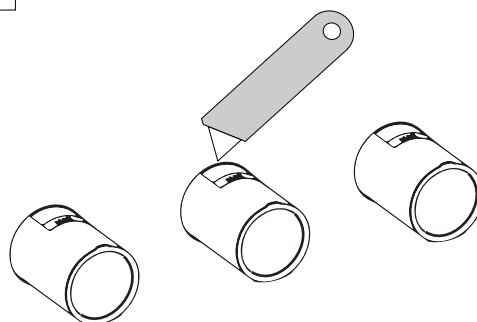
INSTALLATO
INSTALLED



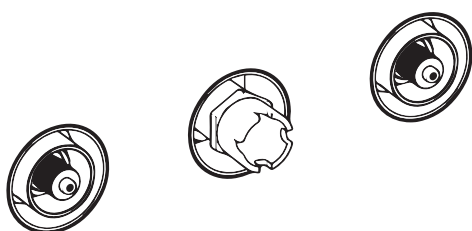
1



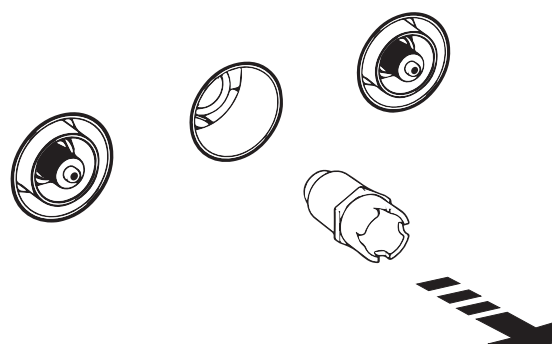
2



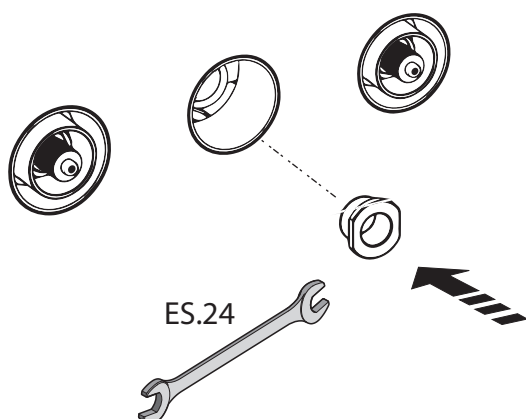
3



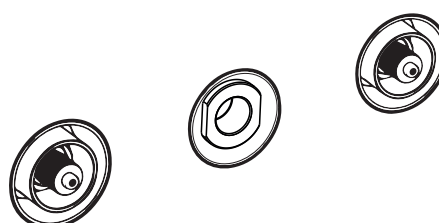
4



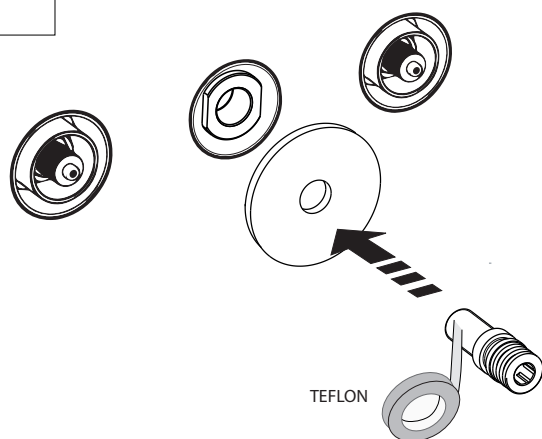
5



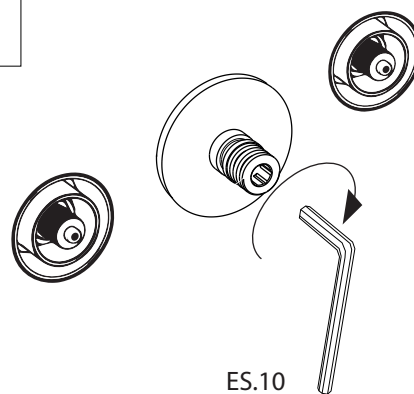
6



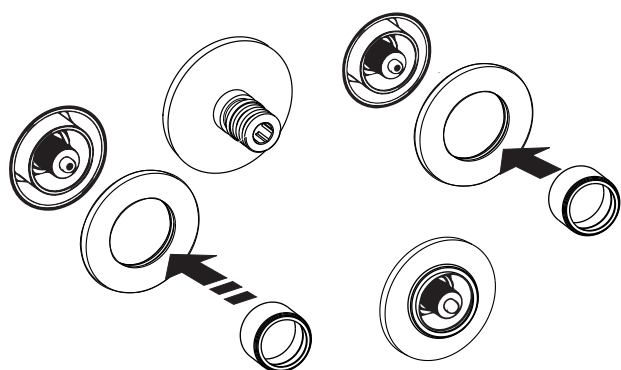
7



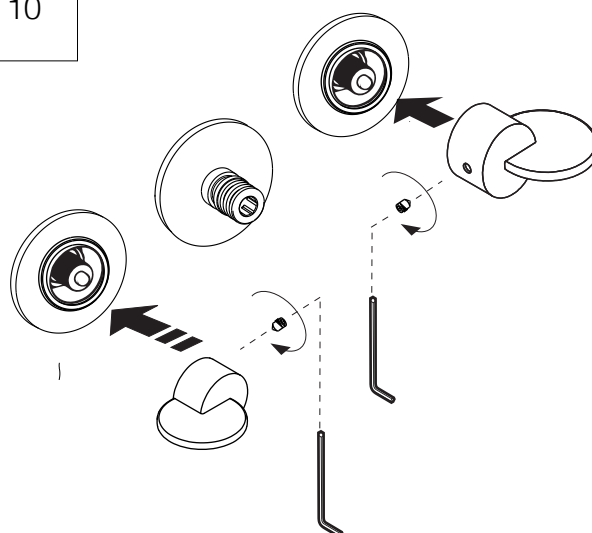
8



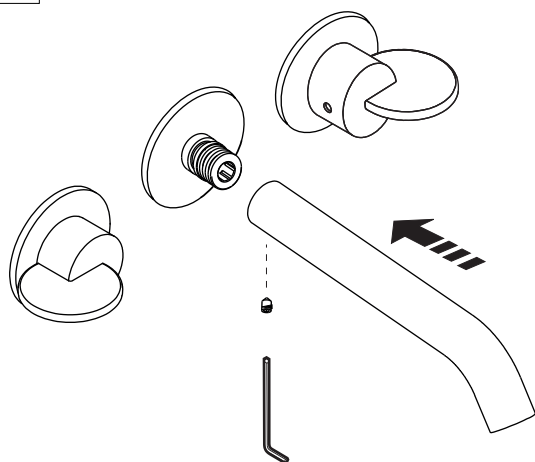
9



10

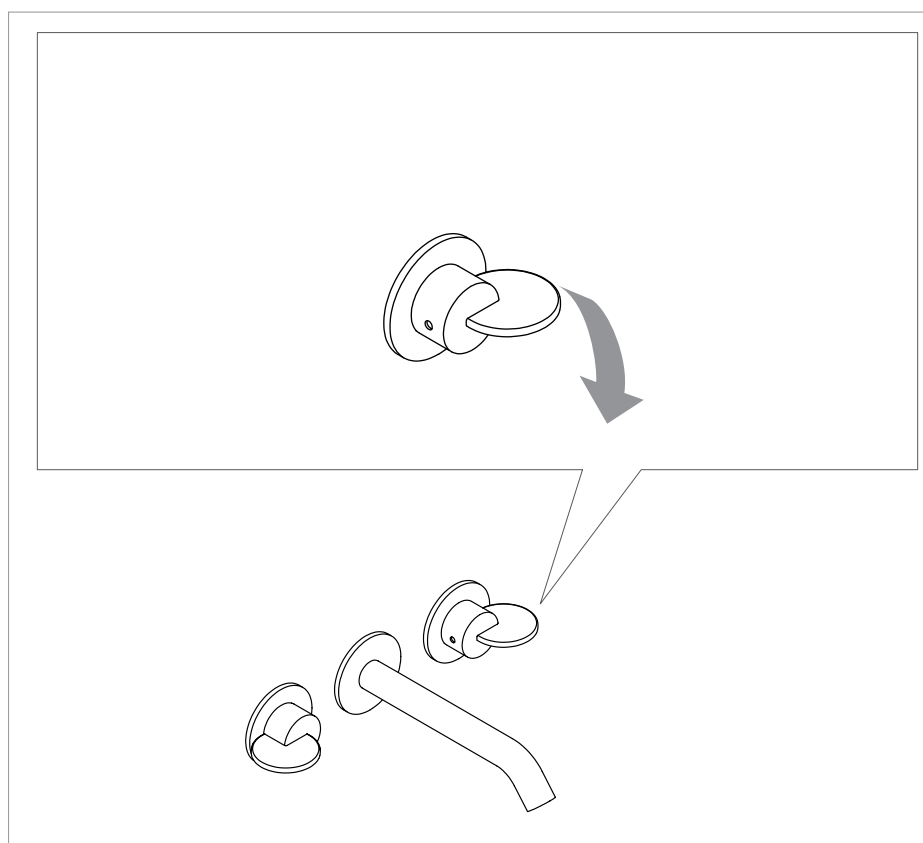


11

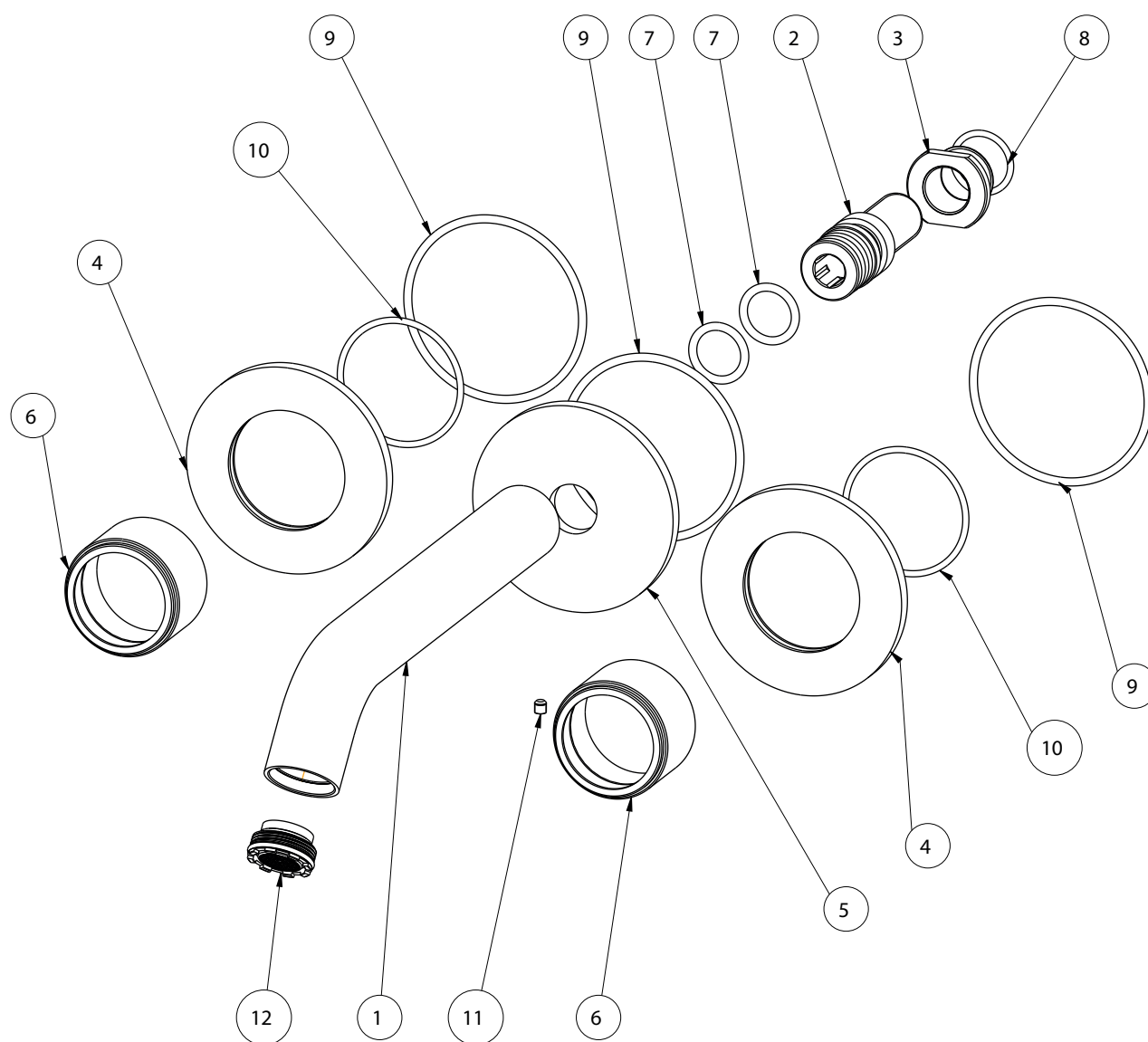


ISTRUZIONI DI UTILIZZO
INSTRUCTIONS FOR USE

- (IT) Al primo utilizzo o dopo un lungo periodo di inutilizzo, non consumare il primo mezzo litro di acqua potabile erogata. Chiudere l'impianto idraulico in caso di prolungata assenza. Controllare periodicamente la tenuta.
- (EN) On first use or following prolonged periods of inactivity, do not use the first half-litre of drinking water dispensed. Shut off the plumbing system in the event of a long absence. Check the water-tightness regularly.



.ELIX422



MANLIM01

